



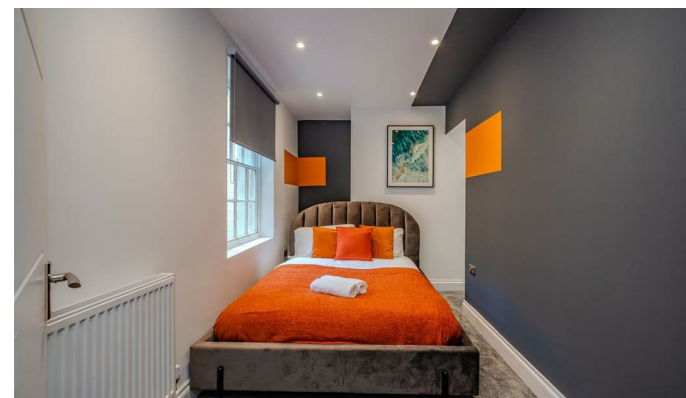
## Bloomsbury Place

, Brighton BN2 1DA

- AVAILABLE FEBRUARY
- PET FRIENDLY
- PERFECT FOR NHS STAFF!
- BRIGHT THROUGHOUT
- FURNITURE OPTION AVAILABLE
- GREAT LOCATION
- INTEGRATED APPLIANCES
- STUDENTS WELCOME!

**£1,650 Per Month**

**Local Authority Brighton &  
Hove City Council  
Council Tax Band B  
EPC Rating**



**Moretons Lettings Office**  
30-31 North Street, Brighton,  
East Sussex, BN1 1EB

### **Contact**

Agents Note: Whilst every care has been taken to prepare these particulars, they are for guidance purposes only. All measurements are approximate and for general guidance purposes only and whilst every care has been taken to ensure accuracy, they should not be relied upon and potential buyers/tenants are advised to recheck the measurements.